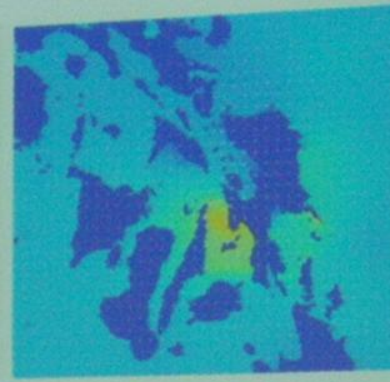
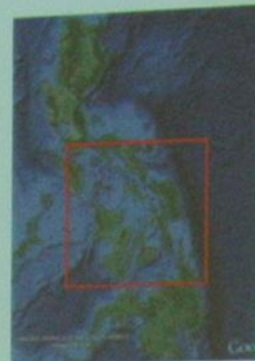
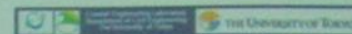


Welcome Speech by Professor Sato

School of Engineering



Bathymetry: GeBCO08 30sec, spherical coordinate system
Typhoon data: digital typhoon
(<http://agora.nri.ac.jp/digital-typhoon/index.html.en>)
Typhoon model: Matsuba et al. (2006)
Period: Nov 7 21:00 - Nov 8 18:00 (2013)



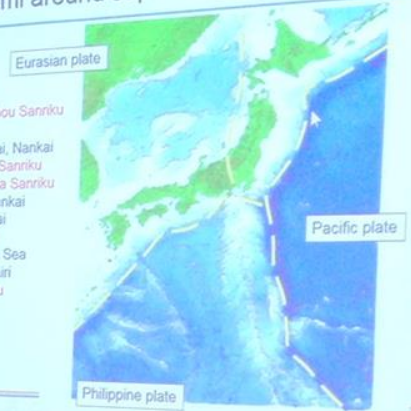
Professor Sato Shinji (Civil Engineering)
(Coastal Engineering Labo)
Chairman,
International Committee
School of Engineering





Tsunami around Japan

- 1611 Keichou Sanriku
- 1854 Toukai, Nankai
- 1896 Meiji Sanriku
- 1933 Showa Sanriku
- 1944 Tounankai
- 1946 Nankai
- 1960 Chile
- 1983 Japan Sea
- 1993 Okushiri
- 2011 Tohoku





- 1 Welcome Speech
- 2 Staff Introduction
- 3 Campus Life, Rules, Deadline
- 4 Global education
- 5 Library Service
- 6 Free conversation



にほんこえ Lunch Table





6 Free con





2 Staff Introduc

3 Campus Life, Rules

4 Global educat



5 Library Servi

6 Free conversat







For MEXT Scholarship Students 国費留学生へ

① October allowance: October 20th, 2011

Signature rule

- ② Please get the schedule of deadline for the monthly signature at the local department office as it depends on each department office.
- ③ If you miss the date of deadline for signature, scholarship will not be given. When you go abroad and come back again, you must submit "departure" and "return" form to your department office.
- ④ Keep your visa "Student". If you change it, you will be disqualified for MEXT scholarship student.
- ⑤ MEXT will not allow all cases even if you miss the date of deadline for signature with personal reason.

*If you have any personal question, ask your department office or OIS.





